

PIM

Domestic hot water pre-heater

PIM BI

Stainless steel pre-heater range

OPTIMISED HANDLING

- > Reinforced feet for a great stability
- > Low weight
- > Handing integrated in the pier

ASSURED PERFORMANCE

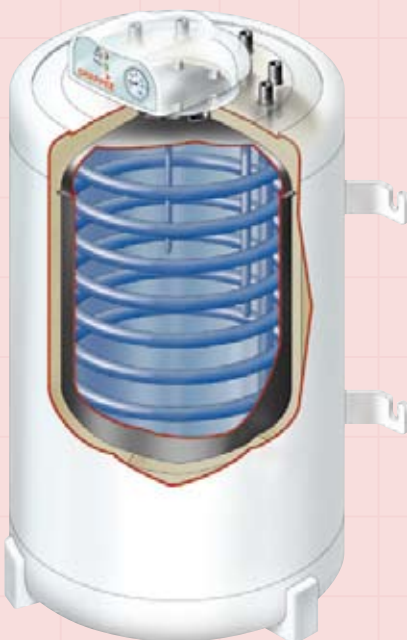
- > Cold water diffuser for optimal performance
- > Exchanger and resistor at the bottom of the tank
- > Optimised used of capacity and low losses

- ◆ 3 capacities and a powerfull exchanger of 25 kW
- ◆ Working pressure 7 bars
- ◆ Delivery 1 parcel
- ◆ Options: Electric resistance C17202005
Hydraulic coupling kit for BORA C17517050 boiler



Manufacturing warranty

- > Manufactured in factory dedicated to inox products
- > Continuous quality control of all storages at 15 bars pressure
- > Warranty: 10 years



PIM 120

Enamelled steel pre-heater range

ASSURED PERFORMANCE

- > Recirculation tube for even distribution
- > Coil with offset loop for optimal tank heating

- ◆ A capacity specially designed for Luna 3 HT Prime WHB boiler
- ◆ Working pressure 7 bars
- ◆ Delivery 1 parcel

Guide to choosing ECS water pre-heaters

		1 bathroom		2 bathrooms		3 bathrooms				
		2/3 people		3/4 people		5 people and over				
		Bath or Shower	Shower	Bath or Shower	Shower	Bath or Shower	Shower	Power shower		
Model	Material	Pre-heater capacity in litres	Rate of delivery (l. in 10 minutes)	135	195	185	285	235	285	335
PIM 120	Acier	120	230							
PIM BI	Inox	150	250							
PIM BI	Inox	200	310							
PIM BI	Inox	300	410							

Average water consumption at a constant 40° (litres):

Kitchen sink: 45 l

1 shower: 50 l

1 bath: 90 l

1 power shower: 150 l

■ Comfort ■ Luxury

Bath Shower Power shower

Model	PIM 120	PIM BI		
		150	200	300

General informations

References	C14890120	C10511015	C10511020	C10511030
Tank capacity (l)	120	150	200	300
Exchanger capacity (l)	8	7	7	7
Heating surface area (m²)	0,97	0,95	0,95	0,93
Heat loss in exchanger (mbar)	51	50	50	50
Working flow rate of heating water (m³/h)	2	2	2	2

Exchanger power rating

	PIM 120	PIM BI 150	PIM BI 200	PIM BI 300
Starting at 80°C (kW)	28	28	28	28
Starting at 70°C (kW)	22	22	22	22

Continuous flow rate*

	PIM 120	PIM BI 150	PIM BI 200	PIM BI 300
Starting at 80°C (l/h)	740	720	720	720
Starting at 70°C (l/h)	580	560	560	560
Draw-off flow rate over 10 minutes** (l)	230	250	310	410
Heating time (mm)	15	16	24	27
Off-demand consumption $\Delta t = 40^\circ K$ (W)	50	45	60	80
Coefficient of performance	1,6	2,3	4,1	7,5

Dimensions and weight

	PIM 120	PIM BI 150	PIM BI 200	PIM BI 300
Height (mm)	905	1090	1474	2040
A (mm)	-	314	314	314
B (mm)	-	354	354	354
C (mm)	-	792	1094	1572
D (mm)	655	803	1088	N/A
ϕ (mm)	550	552	552	552
Weight (kg)	58	31	37	55

Features

Performs best with high hydraulic head. The other stated levels of performance are achieved with a built-in pump or one supplied as an optional extra.

* Temperatures:

- cold water: 10 °C

- hot water: 45°C.

** Water stored at 60°C.

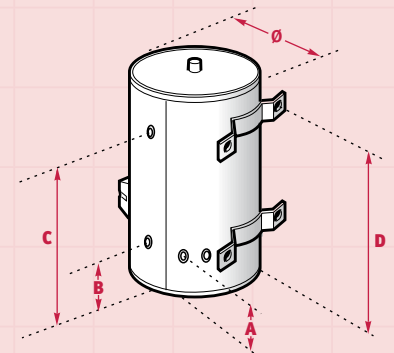
Maximum exchanger temperature: 110 °C

- 1 mba ; 10 mm CE ; daPa.

- Maximum tank pressure: 10 bars

- Maximum exchanger pressure: 4.5 bars.

NB: the boiler pressure is equal to or higher than that of the exchanger.



**157, Avenue Charles Floquet
93158 Le Blanc Mesnil Cedex - France
Phone: + 33 1 45 91 56 00
Fax: + 33 1 45 91 59 90
www.chappee.com**
Baxi SA au Capital de 43 214 640 €
RCS Bobigny B 602 041 675 - APE 282 D

SUPPLIED GENERAL FEATURES	
	Floor fitting
	Wall fitting
	Under boiler (up to 50kW)
SUPPLIED	
	High quality inox steel tank and coil
	50 mm injected polyurethane injected insulation
	Lacquered steel jacket
	Load pump, non return valve, hoses
	Electronic sensor and boiler connecting cable
	Detachable anode inspection trap at front
	Water temperature thermometer